



## Heavy Load Moving Skate

**• Feature:**

- Great for moving heavy equipment and machinery
- Made of nylon wheel with a powder-coat finish
- Top of the skate has a rubber surface for extra grip
- Wheels are set up to move in straight lines
- Carrying handle makes it easy to move from job to job
- Anti-slip rubber pads provide added stability and protection

Model: SH-D17056



Model: SH-D17058  
SH-D17059  
SH-D17060



Model: SH-D17076



Model: SH-D17075



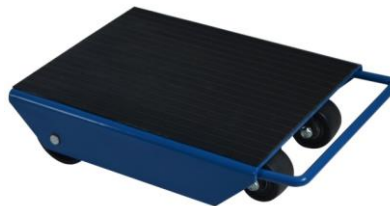
Model: SH-D17077



L" x W" x H"	Caster Type	Capacity(lbs)	Item No.
8-13/16" x 15-3/4" x 4-1/2"	3-15/16" x 1-3/8" Nylon	2200	SH-D17056
40-1/8" x 8-1/16" x 6-7/8"	2" x 15/16" Rubber	44000 / 66000 / 132000	SH-D17058/SH-D17059/SH-D17060
8-13/16" x 15-3/4" x 4-1/2"	3-15/16" x 1-3/8" Nylon	4400	SH-D17075
4-11/16" x 11-1/32" x 3-15/16"	3-5/16" x 3-1/2" Nylon	5500	SH-D17076
8-5/8" x 15-3/4" x 3-15/16"	3-5/16" x 3-1/2" Nylon	6600	SH-D17077

**• Feature:**

- Great for moving heavy equipment and machinery
- Made of nylon wheel with a powder-coat finish
- Top of the skate has a rubber surface for extra grip
- Wheels are set up by two swivel caster to turn smoothly
- Carrying handle makes it easy to move from job to job
- Anti-slip rubber pads provide added stability and protection



Model: SH-D17073



Model: SH-D17074

L" x W" x H"	Caster Type	Capacity(lbs)	Item No.
19-11/16" x 13-3/4" x 4-1/2"	3" x 1-3/4"Nylon // 3-15/16" x 1-3/8" Nylon	2200	SH-D17073
19-11/16" x 13-3/4" x 4-1/2"	3" x 1-3/4" Nylon	2200	SH-D17074